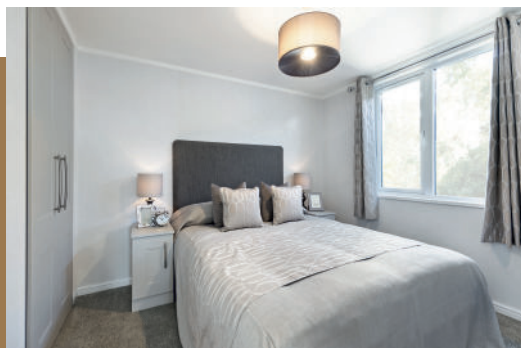


Homes starting from £224,950

Gateforth Park

Residential Park Homes
for the Over Fifties in the Vale of York



*You are invited
to our*
Open Weekend
19th -21st April 2024

- Reserve your plot on Phase 2 including the Lakeside, each with private lake access & fishing rights
- Quiet countryside retreat, next door to Selby Golf Course and excellent transport links - Selby station to London in under 2 hrs
- Secure, private gated community with CCTV & on-site management
- Energy efficient, single storey living, fully furnished for a hassle-free move
- Part exchange available
- Assisted Move package & no Stamp Duty to pay

**Can't make the Open Weekend?
Give us a call to arrange
your own private viewing...**



Scan with your phone/
tablet to see the homes
available to view

Contact the team on 01757 616 646
or email gateforthpark@yhl parks.co.uk
www.gateforthpark.co.uk
Reception Building • Gateforth Park • Selby • YO8 9UG