



OMAR IMAGE PARK HOME

# IMAGE



## Key Features

- Boxed out windows with CanExel cladding detail
- Recessed front door with feature CanExel cladding under a roof dormer
- Vaulted ceilings to the lounge, kitchen and dining areas
- Semi-enclosed entrance with boot seat and coat hooks
- Feature electric fire with recessed shelves either side
- Dressing area to the master bedroom with two fitted double wardrobes

## Example Floor Plan (40' x 20')

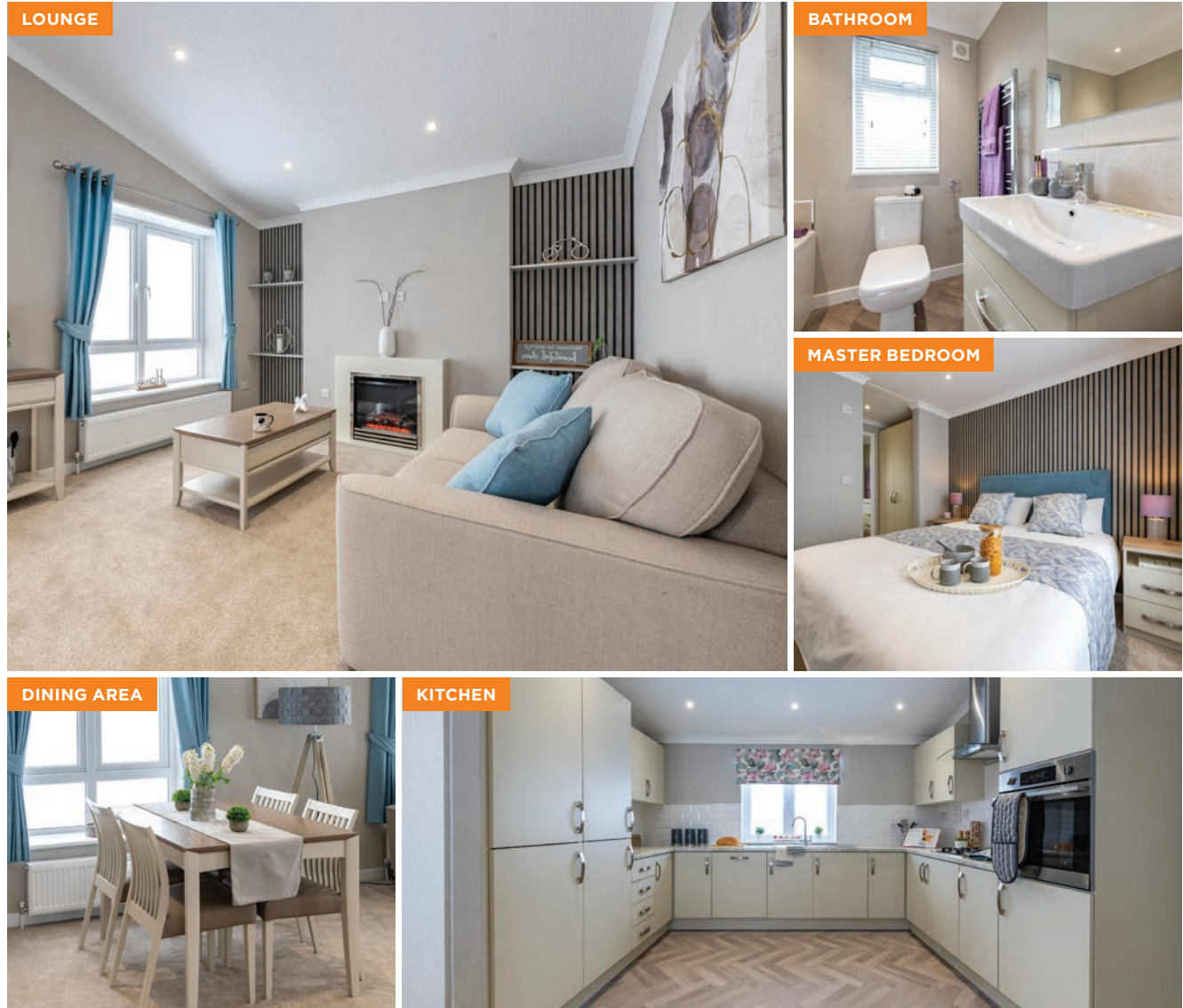
The Image is available in a range of standard floor plans which can be adapted to suit your individual needs.



This model is available as a twin or a single unit. The minimum size is 35' x 12' and the maximum size is 65' x 22'.

## Visit our showground

To see our park homes and lodges first-hand, book an appointment to visit us. We have showgrounds with a number of models available to view at both our Brandon, Suffolk and Hull manufacturing facilities.



Omar Park & Leisure Homes, Pleszko House, London Road, Brandon, Suffolk IP27 ONE

**01842 810 673** | [www.omar.co.uk](http://www.omar.co.uk) | [sales@omar.co.uk](mailto:sales@omar.co.uk)

To see more scan this code

