



HARBOUR

Luxury Lodge



Exterior image courtesy of the Waterside Holiday Group

t: 0345 257 0400 | e: sales@wessexparkhomes.co.uk | w: wessexparkhomes.co.uk
Head Office & Manufacturing Centre, Pleszko House, London Road, Brandon, Suffolk IP27 0NE



HARBOUR

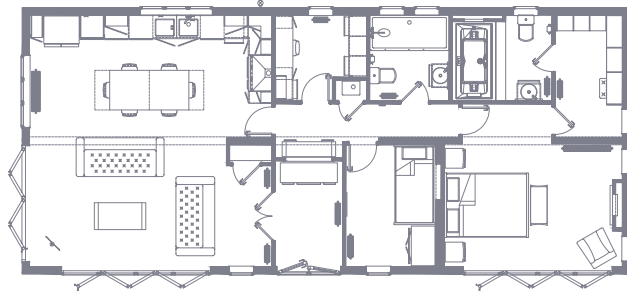


Key Features

- Monopitch roof and extended soffit with down-lights
- Feature double front door with glazed panels to either side
- Feature glazing including two sets of bi-fold doors to the lounge and a third to the master bedroom
- Clad in A-grade cedar wood (CanExel cladding also available)
- Fitted kitchen with premium branded appliances including a range cooker, microwave, washer / dryer, dishwasher, coffee machine and wine cooler
- Freestanding American style fridge freezer
- En-suite with whirlpool bath
- White panelled ceilings and panelled walls
- Victorian style radiators throughout

Example Floor Plan (50' x 22')

The Harbour is available in a range of standard floor plans which can be adapted to suit your individual needs.



The minimum size for this model is 45' x 22' and the maximum size is 65' x 22'.

Visit our showground

To see our park homes and lodges first-hand, book an appointment to visit us. We have showgrounds with a number of models available to view at both our Brandon, Suffolk and Hull manufacturing facilities.

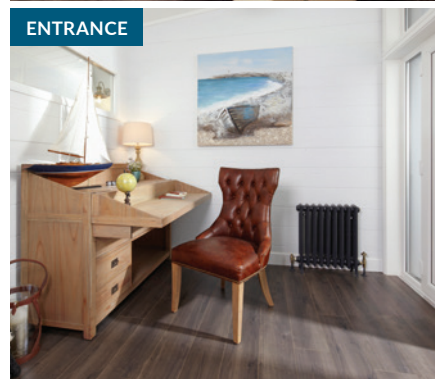
Scan to see more



Please note: The images and specification for this model are for a bespoke fit-out and are for illustrative purposes only. Decking and props are not included, some photos may include optional extras and specifications and layouts may differ from those shown here. For full details and options, please contact our sales team.



LIVING AREA



ENTRANCE



DINING AREA



MASTERBEDROOM



EN-SUITE